

### Lift and Dispense Drum with Your Hoist or Crane

>> [Kontrol-Karrier Video](#) <<

#### Heavy-Duty Kontrol-Karriers 1500 Lb. (680 kg) Capacity

MADE  
IN  
USA

- Attach to your hoist or crane for quick, sure below-hook drum handling
- Provides controlled high-level pouring above your reach
- Allows 360° drum tilt control in both directions
- Saves time, reduces waste, and improves productivity

#### Custom versions available

- Longer arms for use with Drum Cone
- Nested lifting point to reduce required head room
- USDA approved epoxy or "steel-it" paint

Morse model 185G-HD Heavy-Duty Kontrol-Karrier has a 12' (366 cm) long loop of pull chain with 6' (183 cm) drop for you to control drum tilting 360° in either direction. Dispense a drum overhead with your crane or hoist.

We recommend the MORStop™ Tilt-Brake option to automatically hold the drum tilt angle until you move it. This prevents a partially full, unbalanced drum from turning out of control, even when the contents shift from one end to the other.

Can also be ordered with Hand Crank or Hand Wheel option for use only within reach of operator.



#### Model 185G-HD Heavy-Duty Kontrol-Karrier with 3-Piece Drum Holder

- For 22.5" (57.2 cm) diameter steel drum
- Accepts Diameter Adapter for 19" (48.3 cm) diameter drum
- Bolt-on Top Rim Clamp Option
- Bracket Assembly Option for a plastic or fiber drum

- Has chain wheel controlled tilt with 60:1 gear ratio and safety covered gears
- Stands upright on foot support
- Handles drum with drum faucet in place
- Capacity:  
1500 Lb. (680 kg) full-drum  
800 Lb. (363 kg) half-full drum

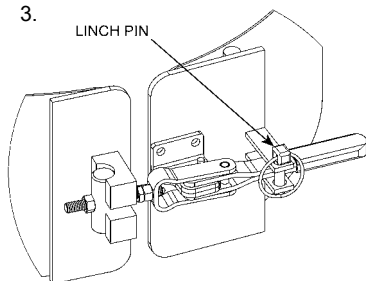
Half-full rating is an indication of capacity for tilting an unbalanced, bottom-heavy drum. A partially full drum with unbalanced and shifting load is harder to tilt than a full drum.

### Steps for Use of Model 185G-HD Heavy-Duty Kontrol-Karrier with 3-Piece Drum Holder

1. Start with Kontrol-Karrier on floor. Attach off-center lifting point of Kontrol-Karrier to your hoist hook, then move to drum.

2. Raise your hoist to lift Kontrol-Karrier. Mate Kontrol-Karrier's drum holder to middle of drum.

3. Secure drum holder to drum between drum ribs... no tools are needed. To secure drum, pull lynch pin, open toggle clamp and swing both hinged bands to open position. Push Kontrol-Karrier against drum so that drum holder encircles drum. Close two hinged bands around drum, latch toggle clamp and insert lynch pin.



4. Transfer hoist hook to centered lifting point, then lift Heavy-Duty Kontrol-Karrier and drum, with your hoist.

5. To control drum turning, pull down one side of chain loop while letting out the other. To prevent drum rotation, criss cross pull chain and insert in slots of chain lock.

If drum handler has factory installed MORStop™ Tilt-Brake Option, there is no need to hold tension on chain loop. Braking is immediate and self actuating.

To add MORStop™ Tilt-Brake, order Kit # 3900-P for customer to install.

6. After pouring is complete, rotate drum back to vertical position and lower hoist to return to floor.

7. To remove drum from Heavy-Duty Kontrol-Karrier, pull lynch pin, open toggle clamp and swing both hinged bands to open position.



### Options and Accessories

#### Top Rim Clamp



Install **Top Rim Clamp Kit 4560B-P** to safely handle a RIMMED 30-gallon to 55-gallon (114 to 210 liter) size plastic drum. Grips upper drum rim to prevent slipping length-ways.

#### Bracket Assembly



Install **Bracket Assembly Kit 4556-P** to prevent drum from slipping length-ways. Required to safely handle a RIMLESS 55-gallon (210 liter) plastic drum. Also recommended to more securely hold fiber drum. Adjusts for 31" to 39" (78.7 to 99 cm) tall drum.

#### Diameter Adapter for 30-gallon (114 liter) drum

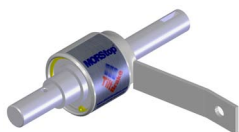


This **Diameter Adapter** allows you to handle a 19" (48.3 cm) diameter drum with model 185G-HD. Simply place Diameter Adapter into the drum holder. When dispensing is complete, simply lift Diameter Adapter out of drum holder to return to handling a 55-gallon (210 liter) drum.

**Model 55/30-19GR** Diameter Adapter for 18.5" to 19" (47 to 48.25 cm) diameter drum

MADE  
IN  
USA

#### MORStop™ Tilt-Brake Automatically prevents unwanted drum tilting



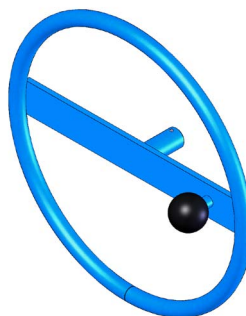
**Option # 3900i-P**  
We recommend the factory installed MORStop™ Tilt-Brake Option on Kontrol-Karrier to automatically hold the drum tilt angle until the operator turns the drum  
**Kit # 3900-P**  
MORStop™ Tilt-Brake Kit for customer to install on existing model 185G-HD

#### Hand Crank to turn drum



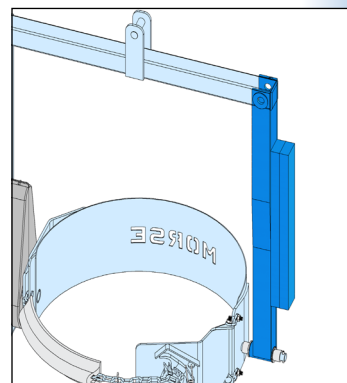
**Option # X02-185**  
Factory installed 9" (22.9 cm) Diameter Hand Crank  
**Part # 5U-P**  
Hand Crank for customer to install

#### Hand Wheel to turn drum



**Option # X03-185**  
Factory installed 16" (40.6 cm) Diameter Hand Wheel with speed knob  
**Part # 2685-P**  
Hand Wheel for customer to install

#### Counter Weight to keep unit level



**Option # 4622i-P**  
Factory installed Counter Weight keeps Heavy-Duty Kontrol-Karrier hanging plumb, even without drum in the holder.  
**Kit # 4622-P**  
Counter Weight Kit for customer to install on model 185G-HD.

### Fork Pocket Kit

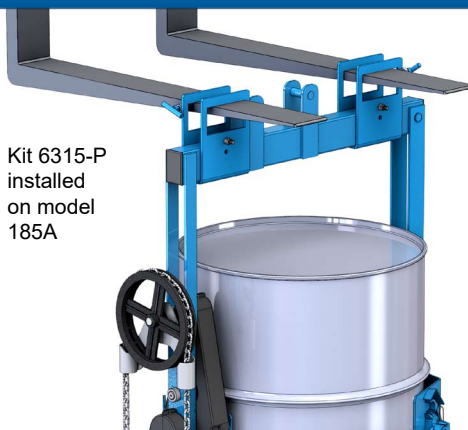
#### Fork Pocket Kit # 6315-P

Add fork pockets to below-hook drum handler. Install on model 85A, 85G, 85i, 86, 185A, 185G, 185A-HD or 185G-HD.

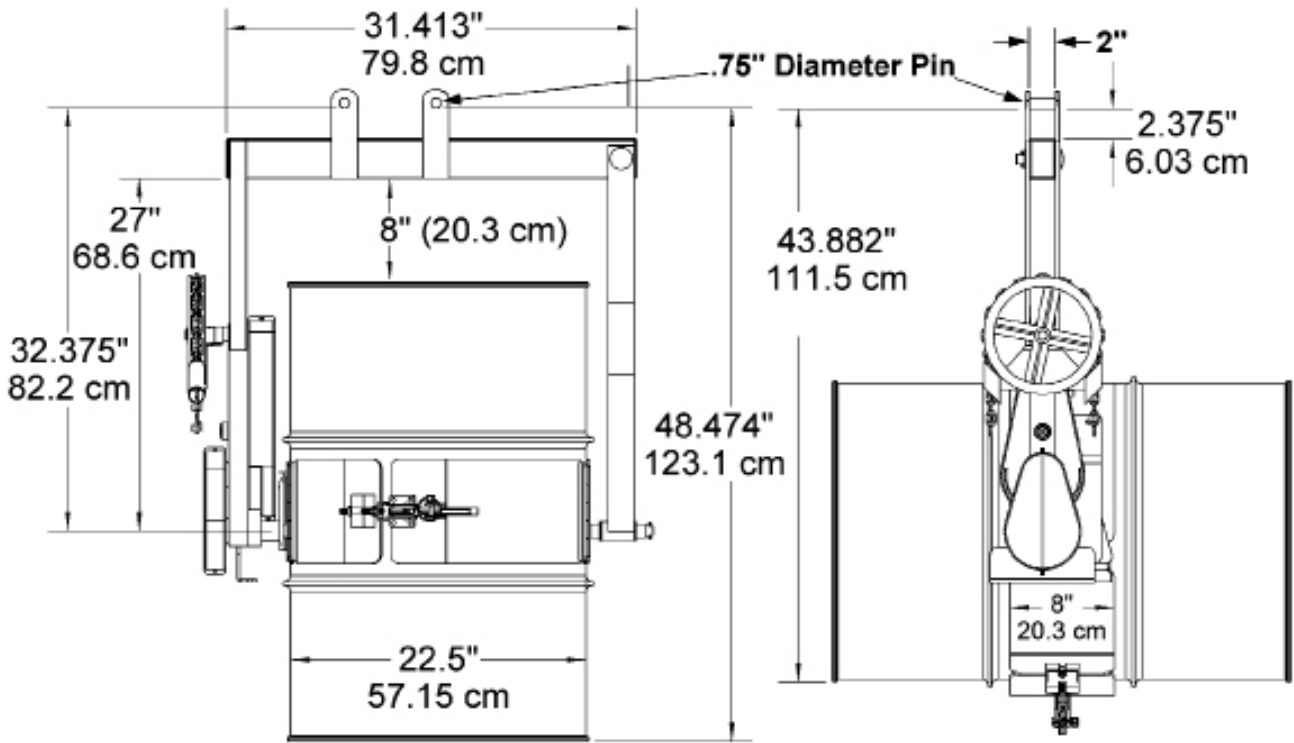
**NOT** for model with spark resistant parts.



Kit 6315-P installed on model 185A



**Dimensions**



MADE  
 IN  
 USA

NOTE: Standard loop of pull chain extends approximately six feet below the chain wheel