

### Parts List and Diagram

As installed on Model 285A-BP Serial # 1290 to 0802 (MMYY)

As installed on 310 Tilt-To-Load Drum Rotator Series Serial # 186037 to 203638

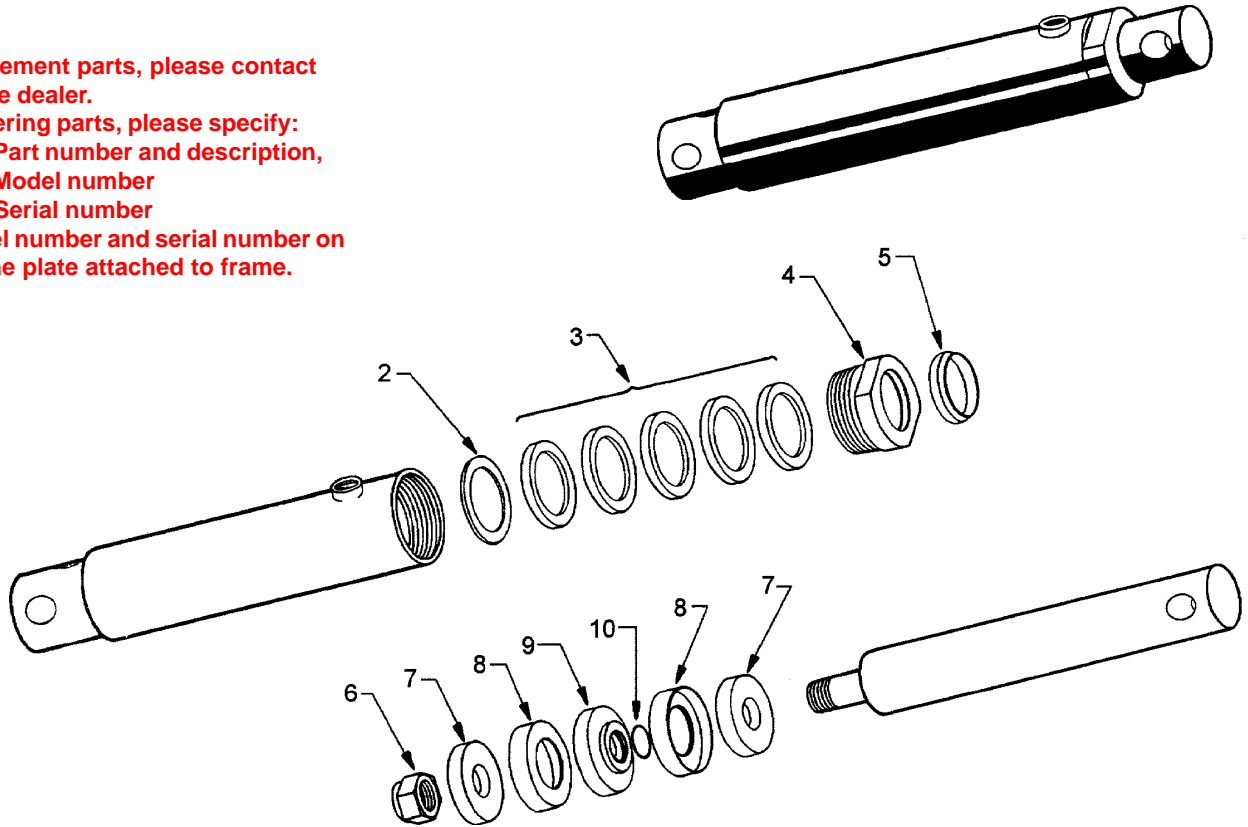
As installed on 600 MORStak Series Serial # 181180 to 204183

For replacement parts, please contact your Morse dealer.

When ordering parts, please specify:

- Part number and description,
- Model number
- Serial number

Find model number and serial number on metal name plate attached to frame.



ITEM	QUANTITY	PART NUMBER	DESCRIPTION
2	1	25332-P	SPREADER, 1277-P
3*	1	25333-P	VEE PACKING SET, 1277-P
4	1	25334-P	PACKING GLAND NUT, 1277-P
5*	1	25335-P	NEOPRENE WIPER, 1277-P
6	1	25336-P	PISTON NUT, 1277-P
7	2	25337-P	CUP SPACER, 1277-P
8*	2	25338-P	CUP, 1277-P
9*	1	25339-P	PISTON, 1277-P
10*	1	25340-P	PISTON O RING, 1277-P
		25345-P	KIT, SEAL, 1277-P

\* Seal Kit includes items 3, 5, 8, 9 & 10