

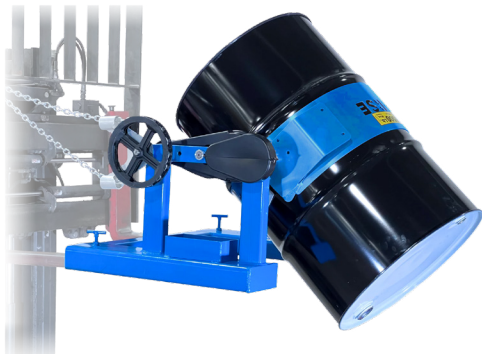


**MORSE** 

# 285A-HD SERIES

SPECIFICATIONS SHEET

**HEAVY-DUTY FORKLIFT-KARRIERS**  
Lift and Dispense a Drum with Your Forklift



## Heavy-Duty Forklift-Karriers

Capacity: 1,500 lbs (680 kg)

The 285A-HD Series Forklift-Karriers are built for heavy-duty drum handling right from your forklift. With quick and secure mounting, these attachments allow operators to lift, rotate, and dispense drums safely and efficiently—eliminating the risks of backbreaking manual labor or makeshift methods. Designed for control and durability, the 285A-HD Series makes drum handling more reliable and less labor-intensive.

**Key Features & Benefits**

- Quick forklift attachment – mounts easily with no tools, modifications, or hydraulic/electric connections.
- Full 360° rotation in either direction, controlled by a 20' (6 m) pull chain loop with 10' (3 m) drop.
- Precise dispensing control with optional Hand Crank or Hand Wheel for use within operator reach.
- Spark-resistant model available – 285AM-HD.
- Stainless steel model available – 285A-HDSS for sanitary or corrosive environments.
- Optional MORStop™ Tilt-Brake automatically holds drum tilt angle until released, preventing uncontrolled rotation of partially full or unbalanced drums.

MODEL	DESCRIPTION	MORSTOP TILT-BRAKE OPTION	HAND CRANK OPTION	HAND WHEEL OPTION	ADAPTERS FOR SMALLER DRUM
285A-HD	Heavy-Duty Forklift-Karrier	3900i-P	X02-285	X03-285	55/30 Series
285AM-HD	Spark Resistant Parts	3900i-P	X02-285M	X03-285M	55/30M Series
285A-HDSS	Stainless Steel	3900SSi-P	X02-285HDSS	X03-285HDSS	55/30SS Series

**285A-HD, 285AM-HD, 285A-HDSS**

- Pull chain tilt control with 60:1 gear ratio
- Safety cover over gears
- Handle drum with faucet in place
- 1500 Lb. (680 kg) full-drum capacity
- 800 Lb. (363 kg) half-full\* drum capacity

*Half-full rating is an indication of capacity for tilting an unbalanced, bottom-heavy drum. A partially full drum with unbalanced and shifting load is harder to tilt than a full drum.*



# 285A-HD SERIES

## Heavy-Duty Forklift-Karriers

### SPECIFICATIONS SHEET

### Steps for use of Heavy-Duty Forklift-Karriers

1. Drive truck forks into the Heavy-Duty Forklift-Karrier's fork pockets.
2. Dismount and screw down the safety locks to grip the forks.
3. Drive to a drum at ground level, so that the drum holder meets the center of your drum.
4. Secure your drum in the drum holder between drum ribs... no tools are needed.



To secure drum, drape the cinch chain with flexible chain cover across the front of the drum, insert one link into the slot on the ratchet handle, and turn the ratchet handle clockwise to tighten the cinch chain around the drum.

5. If your Heavy-Duty Forklift-Karrier is so equipped, tighten the Top Rim Clamp or adjust the Bracket Assembly height.
6. Raise your forklift carriage and the secured drum, then travel to the dumping location.
7. To control turning of the drum without leaving your seat, pull the chain loop for complete control of drum tilting.
8. To remove drum from your Heavy-Duty Forklift-Karrier, turn the ratchet handle clockwise to relieve pressure on the ratchet teeth, lift pawl handle to release teeth engagement, then rotate the ratchet handle counter clockwise to loosen the chain and allow its removal from the slot on the ratchet handle.



### Stainless Steel Model 285A-HDSS

Frame is made of type 304 stainless steel with bead blast finish. Welds are NOT ground smooth or polished.

Some purchased parts are NOT stainless: such as ratchet and pawl. Gears and sprockets are NOT stainless, but are covered with black plastic guards.

### Custom Drum Handler



Custom model **185S-HD-FP** handles drum completely below the forks. Requires 17.5" (44.5 cm) between forks. Or use below-hook with your crane.

Use with:

- Walkie Stacker
- Forklift
- Crane or Hoist Below-Hook

# Lift & Dispense a Drum with your Forklift



Standard MORCINCH Drum Holder has Cinch Chain and Ratchet with flexible chain cover



OPTION 5115i-P Web Strap & Ratchet

## MORCINCH DRUM HANDLING SYSTEM

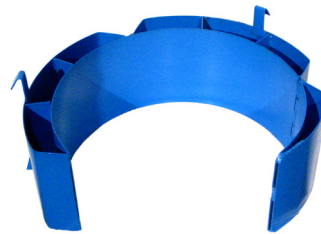
Morse 285A-HD Forklift Karriers feature the MORCINCH™ Drum Handling System Manual-grip drum holder automatically adjusts for 22" to 23.5" (56 to 59.7 cm) diameter drum.

## ACCESSORIES

### Diameter Adapters

*for Smaller Diameter Drums*

Diameter Adapters insert into the drum holder to handle a smaller drum. Select the correct size Diameter Adapter for each drum. Spark resistant and stainless steel Diameter Adapters also available.



### Bracket Assembly

*for Rimless Plastic or Fiber Drums*

The Bracket Assembly provides a brace at top and bottom of your drum to prevent it from slipping lengthways through the drum holder. The Bracket Assembly is required to handle a rimless plastic drum, and recommended to more securely handle a fiber drum. It adjusts for 31" to 39" (79 to 99 cm) tall drum.

- Kit # 4556-P Bracket Assembly
- Kit # 4556M-P Spark Resistant
- Kit # 4556SS-P Stainless Steel



### Top Rim Clamp

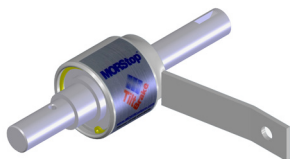
*for Rimmed Plastic or Fiber Drums*

The Top Rim Clamp grips the upper drum rim to prevent it from slipping length-ways. Install it to safely handle a 30-gallon to 55-gallon (114 to 210 liter) size plastic or fiber drum.

- Kit # 4560B-P Rim Clamp Assembly
- Kit # 4560M-P Spark Resistant Rim
- Kit # 4560SS-P Stainless Steel



## INSTALLED OPTIONS



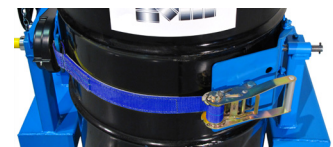
We recommend MORStop Tilt-Brake factory installed on your Forklift-Karrier to automatically hold the drum tilt angle.



9" Hand Crank



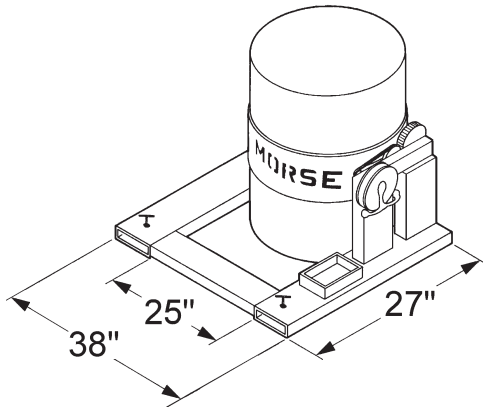
16" Hand Wheel



Web Strap and Ratchet

- Option # 5115i-P Web Strap & Ratchet
- Option # 5115Mi-P Spark Resistant
- Option # 5115SSI-P Stainless Steel

# Dimensions



**IMPORTANT:** Requires 25" (63.5 cm) Between Forks

Fork Pockets are 25" (63.5 cm) apart

Each Fork Pocket Opening:

- Model 285A-HD & 285AM-HD 6.5" wide x 2.5" high (16.5 x 6.35 cm)
- Model 285A-HDSS 5.5" wide x 2.5" high (14 x 6.35 cm)

Fork pockets are 26.5" deep (67.3 cm)

Loop of pull chain extends approximately 10' (3 m) beyond the chain wheel.

